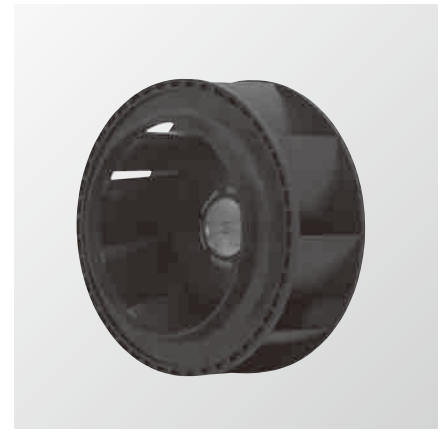


φ133mm

San Ace C133

91mm thick



General Specifications

- Material Motor case: Aluminum,
Impeller: Plastics (Flammability: UL94V-1Min.)
- Expected Life Refer to specifications (L10:Survival rate: 90% at 60°C ,
rated voltage, and continuously run in a free air state)
- Lead Wire ⊕red ⊖black (Sensor) yellow (Control) brown
- Storage Temperature -30°C to +70°C (Non-condensing)

φ133mm×91mm (Mass : 660g)

Specifications When our inletnozzle [Option (Model : 109-1069)] is mounted. The following nos. **have PWM controls and pulse sensors.**

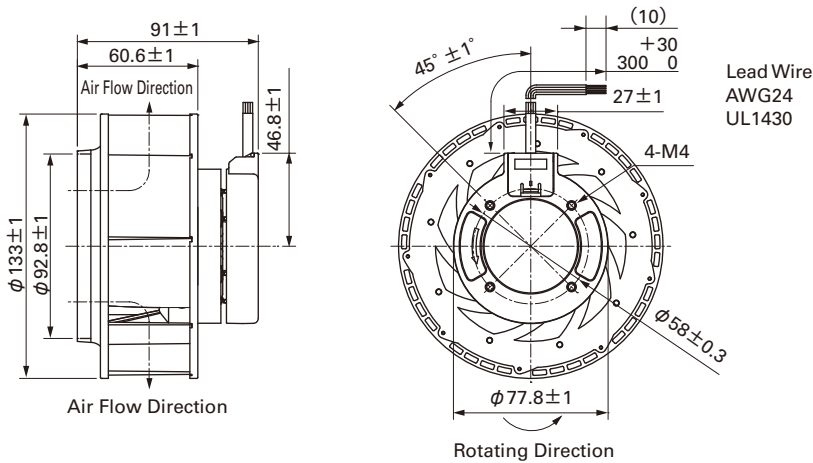
Model No.	Rated Voltage [V]	Operating Voltage Range [V]	PWM duty cycle ^{Note1)} [%]	Rated Current [A]	Rated Input [W]	Rated Speed [min ⁻¹]	Max. Air Flow [m ³ /min] [CFM]	Max. Static Pressure [Pa] [inchH ₂ O]	SPL [dB(A)]	Operating Temperature [°C]	Expected Life [h]
9TJ24P0H61	24	20.4 to 27.6	100	1.2	28.8	4,150	6.39 226	395 1.59	61	-20 to +70	40,000
9TJ48P0H01	48	36 to 72	100	0.55	26.4	4,150	6.39 226	395 1.59	61		

Note 1 : Fan does not rotate when PWM duty cycle is 0%.

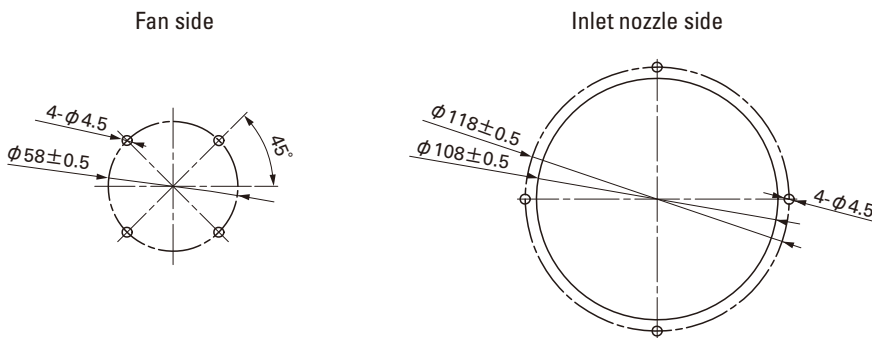
※PWM Frequency : 25kHz

Available options: ⇒ **Without Sensor** **Pulse Sensor**

Dimensions (Unit : mm)



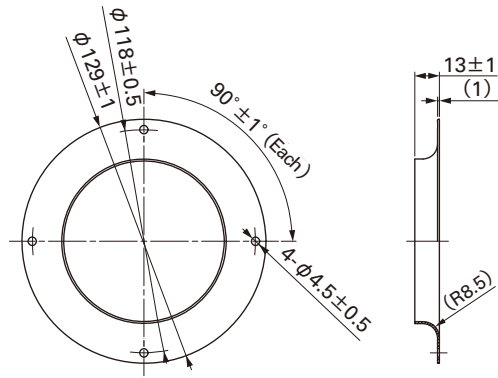
Reference dimension of mounting holes and vent opening (Unit : mm)



Options (Unit : mm)

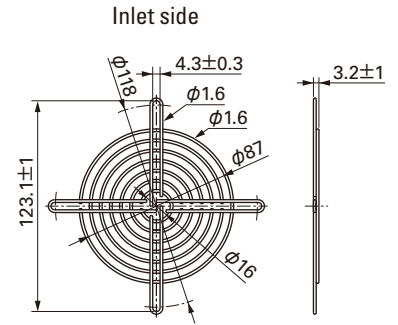
Inlet nozzle

Model : 109-1069 Material : Steel sheet Surface treatment : Electro nickel plating (silver) Color : (silver)
 : 109-1069H : Steel sheet : Cation electropainting (black)



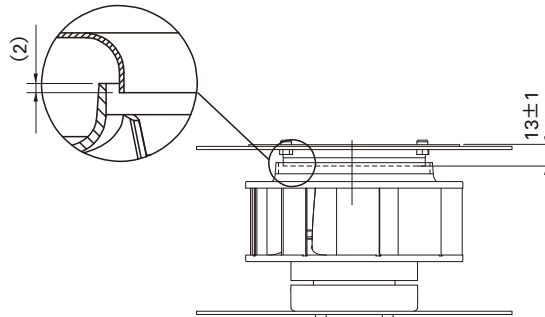
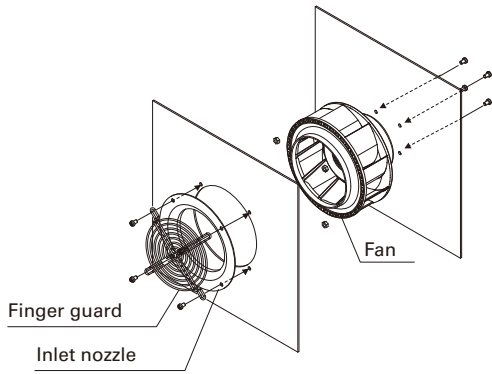
Finger guards

Model : 109-1112 Surface treatment : Nickel-chrome plating (silver) Color : (silver)



Inlet nozzle : Nozzle mounted in fan inlet side to adjust the flow of introduced air

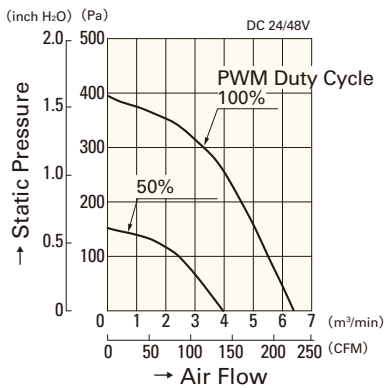
Reference diagram for mounting



The screw length is 6mm less or equal from fan edge side.

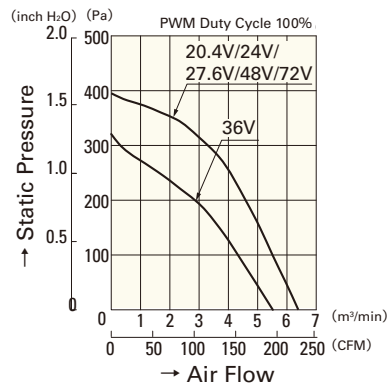
Air Flow - Static Pressure Characteristics

PWM Duty Cycle



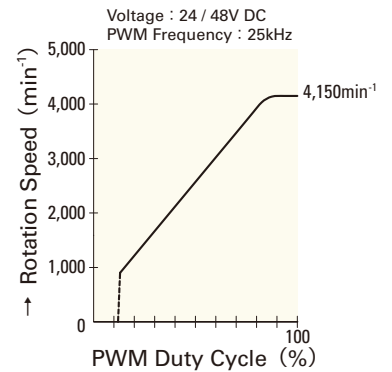
9TJ24P0H61
9TJ48P0H01

Operating Voltage Range



9TJ24P0H61
9TJ48P0H01

PWM Duty Speed Characteristics Example



9TJ24P0H61
9TJ48P0H01