

**92**mm sq.

# San Ace 92WF

25mm thick, 32mm thick



## General Specifications

- Material ..... Frame: Plastics (Flammability: UL94V-0), Impeller: Plastics (Flammability: UL94V-0)
- Expected Life ..... Refer to specifications (L10:Survival rate: 90% at 60°C , rated voltage, and continuously run in a free air state)
- Lead Wire ..... ⊕red ⊖black (Sensor) yellow
- Storage Temperature ..... -30°C to +70°C (Non-condensing)

The product can be used in an oil mist environment\*

\*Environment where machining oil mist is scattered.  
Usage of this product requires an evaluation with the oil that will be used.

**92×92×32mm** (Mass : 185g) **IP 55**

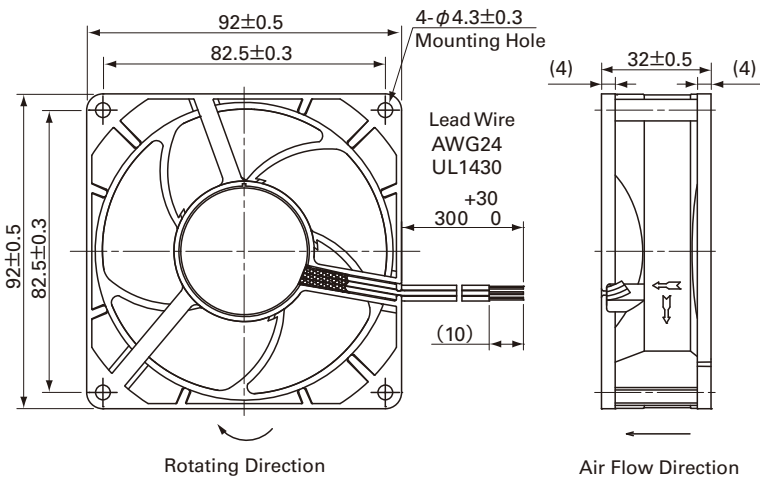
## Specifications

The following nos. **have pulse sensors and ribs.**

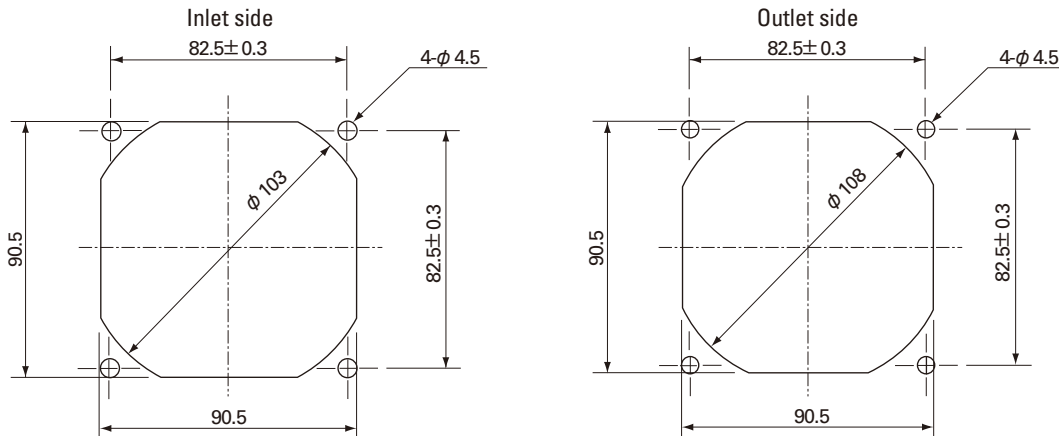
Model No.	Rated Voltage [V]	Operating Voltage Range [V]	Rated Current [A]	Rated Input [W]	Rated Speed [min <sup>-1</sup> ]	Max. Air Flow [m <sup>3</sup> /min] [CFM]	Max. Static Pressure [Pa] [inchH <sub>2</sub> O]	SPL [dB(A)]	Operating Temperature [°C]	Expected Life [h]
<b>9WF0924S201</b>	24	20.4 to 27.6	0.5	12	7,300	2.8 98.9	255 1.02	58	-20 to +70	40,000
<b>9WF0924H201</b>			0.35	8.4	6,500	2.45 86.5	200 0.8	56		

Available options: ⇒ **Without Sensor**

## Dimensions (Unit : mm)



## Reference dimension of mounting holes and vent opening (Unit : mm)

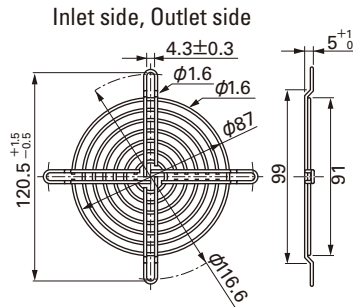
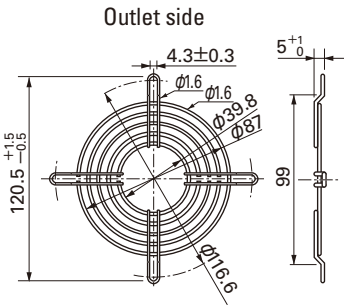


## Options (Unit : mm)

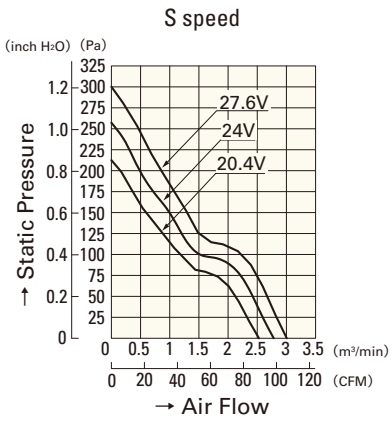
### Finger guards

Model : 109-099C Surface treatment : Nickel-chrome plating (silver) Color

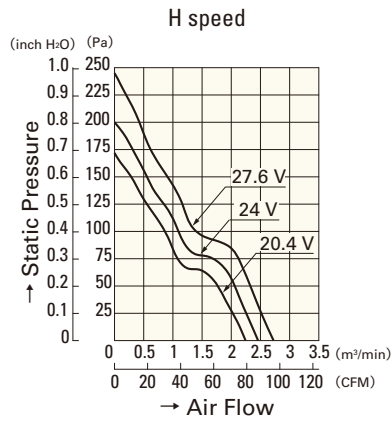
Model : 109-099E Surface treatment : Nickel-chrome plating (silver) Color  
: 109-099H : Cation electropainting (black)



## Air Flow - Static Pressure Characteristics



**9WF0924S201**



**9WF0924H201**

**120**mm sq.

# San Ace 120WF

38mm thick



## General Specifications

- Material ..... Frame: Plastics (Flammability: UL94V-0),  
Impeller: Plastics (Flammability: UL94V-0)
- Expected Life ..... Refer to specifications (L10:Survival rate: 90% at 60°C ,  
rated voltage, and continuously run in a free air state)
- Lead Wire ..... ⊕red ⊖black (Sensor) yellow
- Storage Temperature ..... -30°C to +70°C (Non-condensing)

The product can be used in an oil mist environment\*

\*Environment where machining oil mist is scattered.  
Usage of this product requires an evaluation with the oil that will be used.

**120×120×38mm** [Mass : 355g] **IP 55**

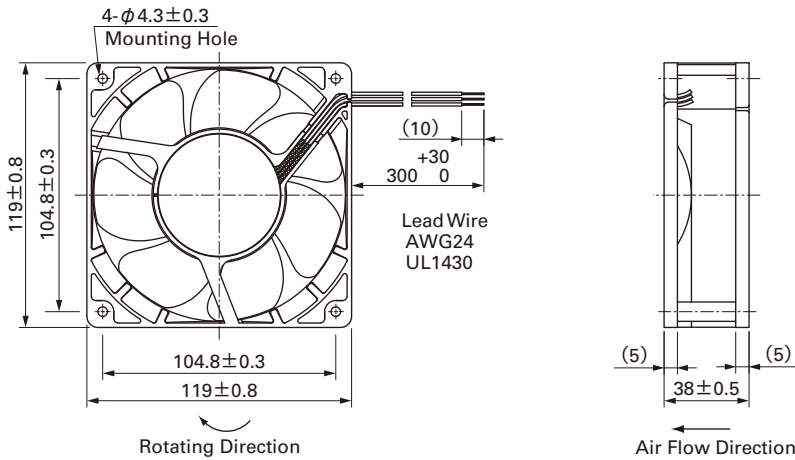
## Specifications

The following nos. **have pulse sensors and ribs.**

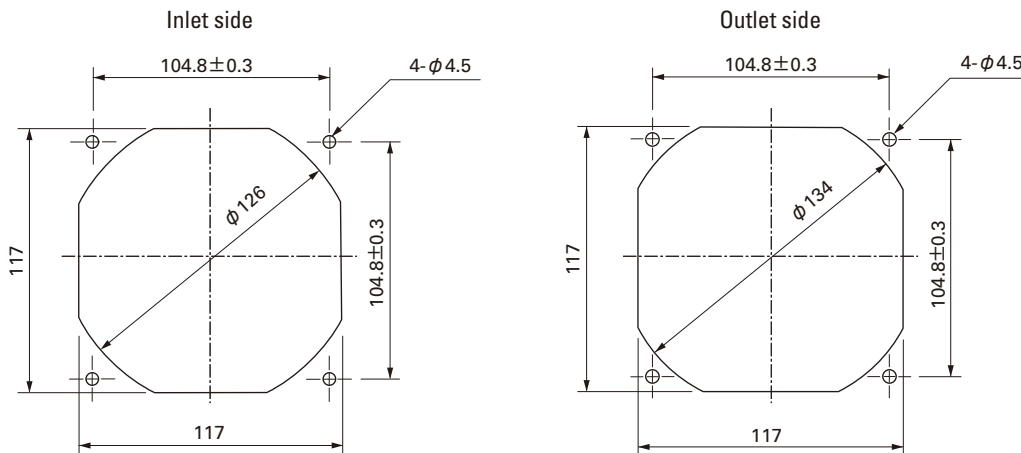
Model No.	Rated Voltage [V]	Operating Voltage Range [V]	Rated Current [A]	Rated Input [W]	Rated Speed [min <sup>-1</sup> ]	Max. Air Flow [m <sup>3</sup> /min] [CFM]	Max. Static Pressure [Pa] [inchH <sub>2</sub> O]	SPL [dB(A)]	Operating Temperature [°C]	Expected Life [h]
<b>9WF1224H101</b>	24	20.4 to 27.6	0.32	7.68	3,100	3.34 118	100 0.40	46	- 20 to + 70	40,000

- Available options: ⇒ **Without Sensor**
- Please inquire as the availability of these functions depend on the model. ⇒ **Lock Sensor**

## Dimensions (Unit : mm)



## Reference dimension of mounting holes and vent opening (Unit : mm)

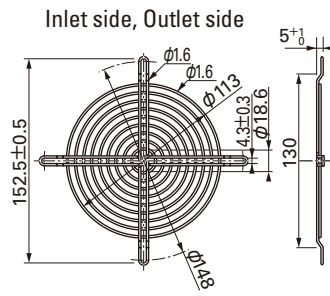
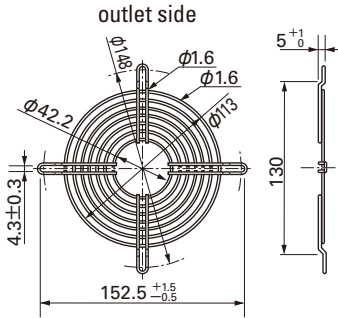


## Options (Unit : mm)

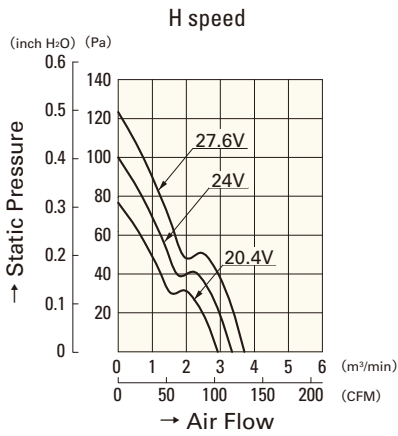
### Finger guards

Model : 109-019C Surface treatment : Nickel-chrome plating (silver) Color : 109-019H Cation electropainting (black)

Model : 109-019E Surface treatment : Nickel-chrome plating (silver) Color : 109-019K Cation electropainting (black)



## Air Flow - Static Pressure Characteristics



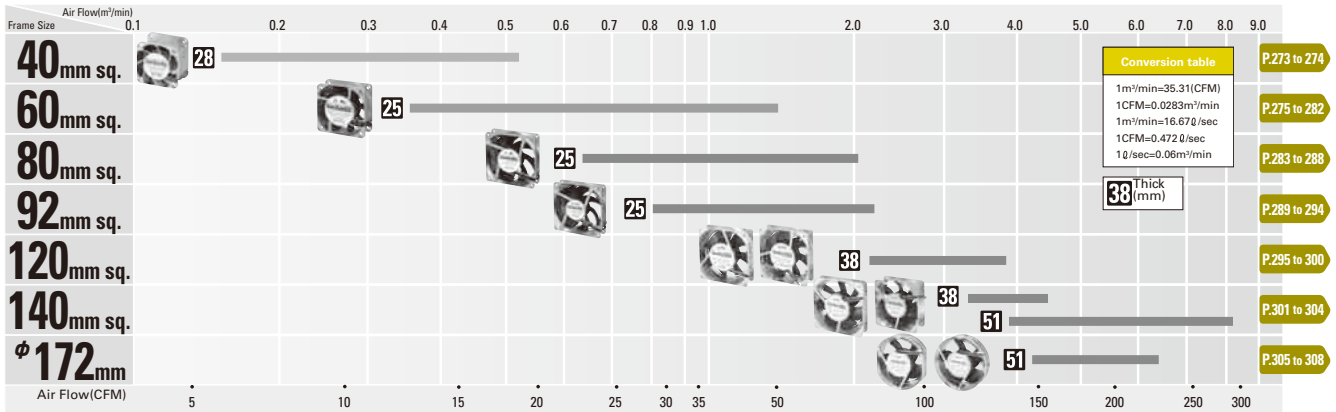
**9WF1224H101**



# Long Life Fan

Cooling fan with Max. 200,000 hours of expected life

## Domain Diagram



## Part Numbering System

Not every combination of the following codes or characters is available. Contact us for an available combination.

109L	12	12	H	1	01
<b>Series name / frame material</b> 109L / Aluminum 9LB / Aluminum 9GL / Aluminum 9L / Aluminum 9LG / Aluminum	<b>Frame size</b> 04: 40×40mm 06: 60×60mm 08: 80×80mm 09: 92×92mm 12: 120×120mm 14: 140×140mm 17: φ172mm 57: φ172mm×150mm(side cut)	<b>Voltage</b> 12: 12V 24: 24V 48: 48V etc	<b>Speed code</b> E,F,G,H,J,L,M,S etc	<b>Frame thickness</b> 1: 38mm thick 3: 28mm thick 4: 25mm thick 5: 51mm thick	<b>Sensor specifications</b> 01: With a pulse sensor 02: Without a sensor D01: With a lock sensor

## Fans with PWM speed control function

Example :

9LG	06	12	P	4	S	001
<b>Series name / frame material</b> 9LG / Aluminum	<b>Frame size</b> 06: 60×60mm	<b>Voltage</b> 12: 12V	<b>PWM speed control function</b>	<b>Frame thickness</b> 4: 25mm thick	<b>Speed code</b>	<b>Individual customer's spec</b> 2 or 3 digits